

Cupsinks

Oval Cupsinks



0499-BP Black Poly
0499-GP Grey Poly
0499-PP Putty Poly
0499-SP Slate Poly
 Complete with integral strainer, 12" horizontal tail-piece, and 90° elbow with 1½" IPS male straight thread outlet. Cupsink inside dimension, 5½" x 3½".

(Overall height is 7", tailpiece and elbow not illustrated)

Designed for front, vertical position in hood work top.



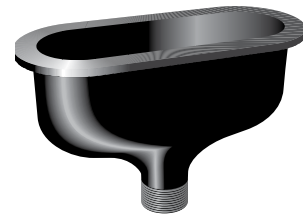
0490-BE Black Epoxy
0490-GE Grey Epoxy
0490-PE Putty Epoxy
0490-SE Slate Epoxy
 Complete with removable strainer. 6"x 3" inside dimension. 1½" IPS male straight thread outlet.

(Overall height is 7½")



0491-BP Black Poly
0491-GP Grey Poly
 Complete with removable strainer. 6"x 3" inside dimension. 1½" IPS male straight thread outlet.

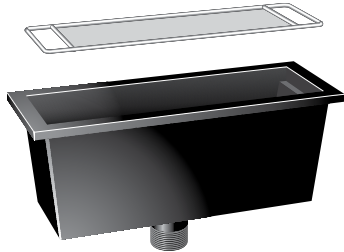
(Overall height is 8½")



0492-BP Black Poly
0492-GP Grey Poly
 Complete with removable strainer. 9"x 3" inside dimension. 1½" IPS male straight thread outlet.

(Overall height is 7")

Rectangular Cupsink



0493-BE Black Epoxy
0493-GE Grey Epoxy
0493-PE Putty Epoxy
0493-SE Slate Epoxy
 Complete with gasket and removable type 316 stainless steel wire screen. 13¾" x 4⅞" x 5¼" I.D. 1½" IPS male straight thread outlet.

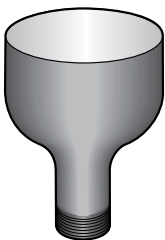
(Overall height is 8")

Side Mounted Cupsink

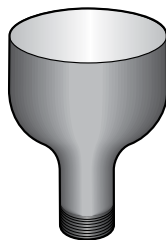


0476-BP Black Poly
 Molded of black polyolefin resins. Complete with 90° union elbow. Designed to be mounted in a vertical panel not over ¼" thick. 6" x 3" inside dimension. 1½" IPS male straight thread outlet.

Stainless Steel Cupsinks



0950-00 Stainless Steel
 Made of type 304 stainless steel and has integral cross bars. 5" I.D. 1½" IPS male straight thread outlet. Designed to be welded into stainless steel tops.



0951-00 Stainless Steel
 Made of type 316 stainless steel and has integral cross bars. 5" I.D. 1½" IPS male straight thread outlet. Designed to be welded into stainless steel tops.



0975-00 Stainless Steel
 Made of type 316 stainless steel and has integral cross bars. 6" x 3" I.D. 1½" IPS male straight thread outlet. Designed to be welded into stainless steel tops.