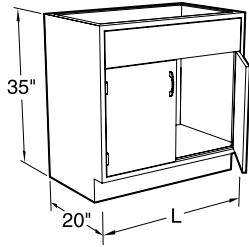


Fume Hood Base Cabinets

DIMENSIONAL VIEW



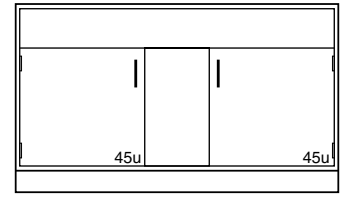
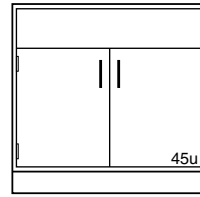
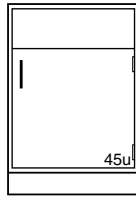
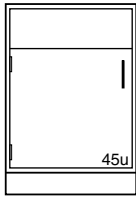
Specifications

Standing Height Steel and Wood Fume Hood Base Cabinets are 35" high and a nominal 20" deep. ADA Height Steel Fume Hood Base Cabinets are 32" high and 20" deep; ADA Height Wood Fume Hood Base Cabinets are 32 1/2" high and nominal 20" deep. Lengths as shown.

Cabinet Style Option:

Specify cabinet door and hardware style when ordering by replacing blanks in last four digits of catalog number with style numbers. See the Research Collection Steel and Signature Series Wood Catalogs for available styles and details.

Standing Height Fume Hood Base Cabinets



Steel Cabinets

(35" High)

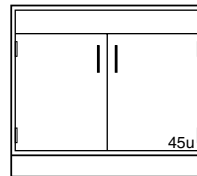
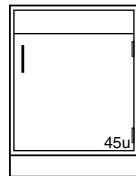
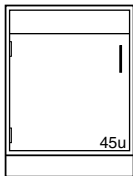
G08C352012L	12"L	G08C352012-	12"L	G08C352030-	30"L	G08C352060-	60"L
G08C352015L	15"L	G08C352015-	15"L	G08C352036-	36"L		
G08C352018L	18"L	G08C352018-	18"L	G08C352048-	48"L		
G08C352024L	24"L	G08C352024-	24"L				

Wood Cabinets

(35" High)

G08W362012L	12"L	G08W362012-	12"L	G08W362030-	30"L	G08W362060-	60"L
G08W362015L	15"L	G08W362015-	15"L	G08W362036-	36"L		
G08W362018L	18"L	G08W362018-	18"L	G08W362048-	48"L		
G08W362024L	24"L	G08W362024-	24"L				

ADA Height Fume Hood Base Cabinets



Steel Cabinets

(32" High)

G08C322012L	12"L	G08C322012-	12"L	G08C322030-	30"L
G08C322015L	15"L	G08C322015-	15"L	G08C322036-	36"L
G08C322018L	18"L	G08C322018-	18"L	G08C322042-	42"L
G08C322024L	24"L	G08C322024-	24"L	G08C322048-	48"L

Wood Cabinets

(32 1/2" High)

G08W342012L	12"L	G08W342012-	12"L	G08W342030-	30"L
G08W342015L	15"L	G08W342015-	15"L	G08W342036-	36"L
G08W342018L	18"L	G08W342018-	18"L	G08W342042-	42"L
G08W342024L	24"L	G08W342024-	24"L	G08W342048-	48"L

Solvent Storage Fume Hood Base Cabinets

Specifications

Solvent Storage Cabinets are specifically designed for the storage of flammable and combustible liquids. Both steel and wood cabinets meet UFC, OSHA and NFPA No. 30-1993 construction standards and are UL listed.

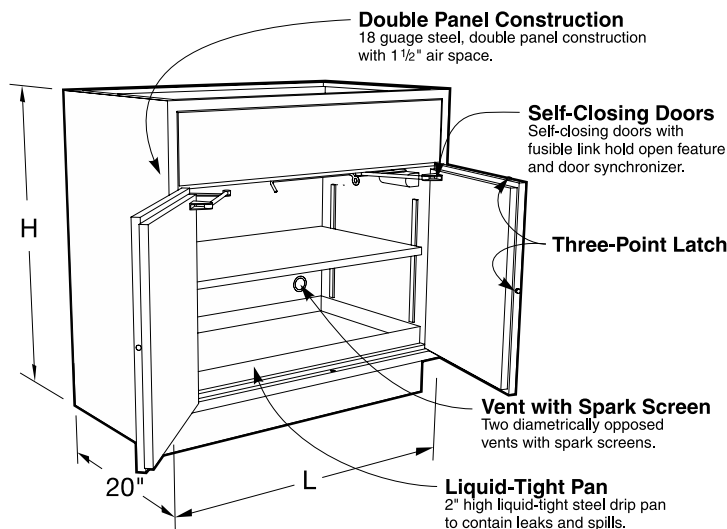
A 2" deep, steel, liquid-tight pan covers the entire bottom to contain liquid leaks and spills. A second pan is provided as a full-depth adjustable shelf.

Two diametrically opposed vents with spark screens are provided in the back for cases when ventilation is required.

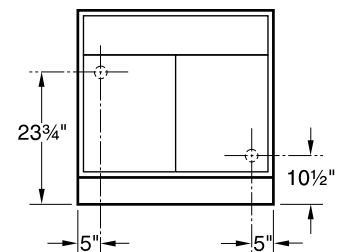
The steel cabinet is all 18 gauge steel, double panel construction with self-closing doors, synchronized so that both doors will always fully close. The right hand door is equipped with a three-point latching system that automatically engages the cabinet

frame. Each door is equipped with a fusible-link hold-open feature that ensures the doors close should the temperature outside the cabinet exceed 165°F. Steel cabinets are provided with a grounding screw at the rear.

All Solvent Storage Cabinets are labeled: CAUTION FLAMMABLE – KEEP FIRE AWAY in English, Spanish, and French.



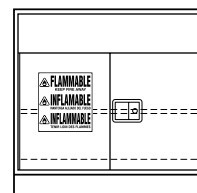
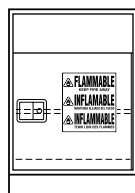
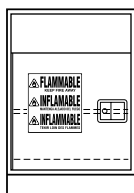
Vent Locations



Steel Solvent Cabinets
Vent outlets 2" dia. Female NPT

Wood Solvent Cabinets
Vent outlets 1 1/2" dia. Male NPT

Standing Height Solvent Storage Fume Hood Cabinets



Steel Cabinets (35" High)		Capacity		Capacity	
G68C352024L_100	24"L	G68C352024-_100	24"L	G68C352030-_100	30"L
		12 gal		12 gal	
<i>Steel Solvent Storage Cabinets are available in Style 0 and 1 only.</i>					
<i>Style 1 - Full Overlay furnished with toespace 1" deeper</i>					
Wood Cabinets (35" High)		Capacity		Capacity	
G68W362024L_0_0	24"L	G68W362024-_0_0	24"L	G68W362030-_0_0	30"L
		12 gal		12 gal	
<i>Wood Solvent Storage Cabinets are available in Style 1 and 5 only</i>					
				G68C352036-_100	36"L
				15 gal	
				G68C352048-_100	48"L
				20 gal	
				G68W362036-_0_0	36"L
				15 gal	
				G68W362048-_0_0	48"L
				20 gal	

ADA Height Solvent Storage Fume Hood Cabinets

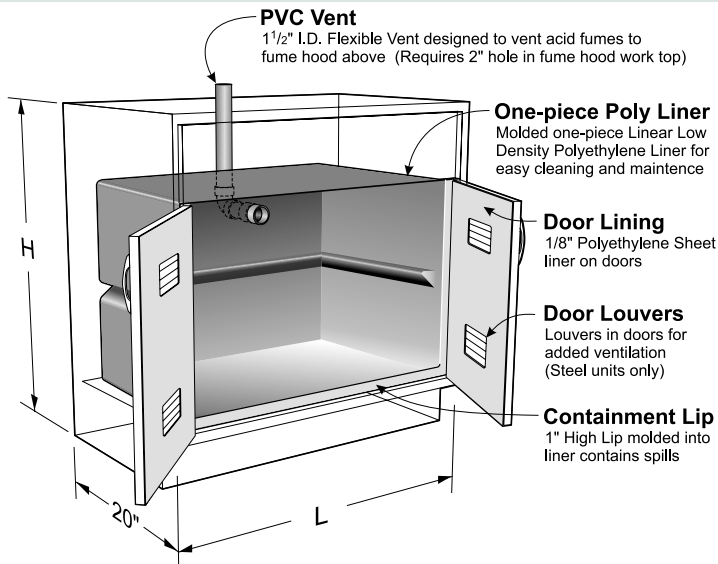
Steel Cabinets (32" High)		Capacity		Capacity	
G68C322024L_100	24"L	G68C322024-_100	24"L	G68C322030-_100	30"L
		12 gal		12 gal	
<i>Steel Solvent Storage Cabinets are available in Style 0 and 1 only.</i>					
<i>Style 1 - Full Overlay furnished with toespace 1" deeper</i>					
Wood Cabinets (32 1/2" High)		Capacity		Capacity	
G68W342024L_0_0	24"L	G68W342024-_0_0	24"L	G68W342030-_0_0	30"L
		12 gal		12 gal	
<i>Wood Solvent Storage Cabinets are available in Style 1 and 5 only</i>					
				G68C322036-_100	36"L
				15 gal	
				G68C322048-_100	48"L
				20 gal	
				G68W342036-_0_0	36"L
				15 gal	
				G68W342048-_0_0	48"L
				20 gal	

Acid Storage Fume Hood Base Cabinets

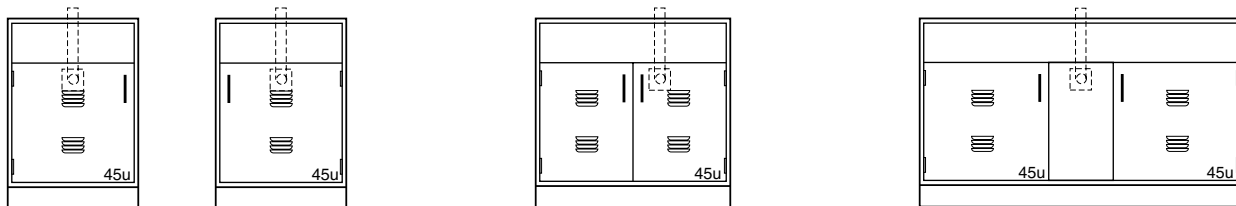
Specifications

Acid Storage Fume Hood Base Cabinets are specifically designed for the storage of corrosive chemicals. They are available in either steel or wood. These cabinets are lined with a molded one piece linear low density polyethylene tub with coved corners and a 1" lip at the bottom

front. The cabinet doors are lined with 1/8" sheet polyethylene and the doors are latched using a nylon roller catch. Each cabinet is furnished with a 1 1/2" I.D. flexible polyolefin tube for venting to the fume hood above. (Requires a 2" hole in the hood work top.)



Standing Height Acid Storage Fume Hood Cabinets



Vent Location

On Center

11 5/8" from Top of Cabinet

Vent Location

30" - 7 5/8" Right of Center

36" & 48" - 5" Right of Center

11 5/8" from Top of Cabinet

Vent Location

On Center

11 5/8" from Top of Cabinet

Steel Cabinets (35" High)

G80C352024L _____ 24"L Left Hand

G80C352024- _____ 24"L Right Hand

Wood Cabinets (35" High)

G80W362024L _____ 24"L Left Hand

G80W362024- _____ 24"L Right Hand

G80C352030- _____ 30"L

G80C352036- _____ 36"L

G80C352048- _____ 48"L

G80W362030- _____ 30"L

G80W362036- _____ 36"L

G80W362048- _____ 48"L

G80C352060- _____ 60"L

G80W362060- _____ 60"L

ADA Height Acid Storage Fume Hood Cabinets

Steel Cabinets (32" High)

G80C322024L _____ 24"L Left Hand

G80C322024- _____ 24"L Right Hand

Wood Cabinets (32 1/2" High)

G80W342024L _____ 24"L Left Hand

G80W342024- _____ 24"L Right Hand

G80C322030- _____ 30"L

G80C322036- _____ 36"L

G80M322048- _____ 48"L

G80W342030- _____ 30"L

G80W342036- _____ 36"L

G80W342048- _____ 48"L

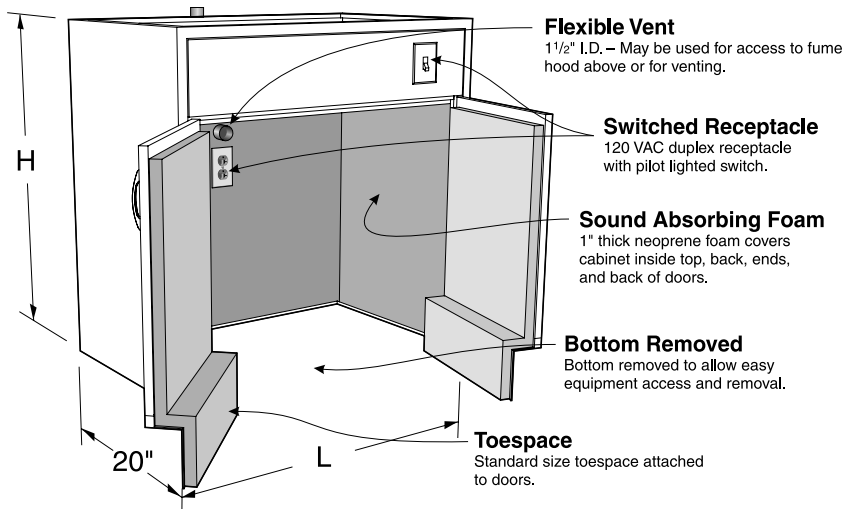
Vacuum Pump Storage Base Cabinets

Specifications

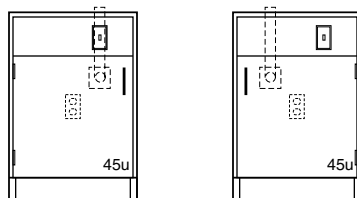
Vacuum Pump Storage Fume Hood Cabinets are designed without a bottom to allow vacuum pumps and other equipment to be rolled in or out of the cabinets. The interior is lined with 1" thick neoprene foam for sound deadening and easy cleaning. Each

cabinet is furnished with a 120 VAC, 20 amp, duplex receptacle mounted on the inside cabinet back and a pilot lighted toggle switch mounted in the top front rail. (Wiring is not included.) Each cabinet is furnished with a 1½" I.D. flexible polyolefin tube for venting

to the fume hood above. (Requires a 2" hole in the hood work top.) The toespace rail is attached to the door to allow total access to the cabinet. Cabinet inside clearance at the floor is 14½" front-to-back, 25" high, and 3" less than the overall cabinet length.



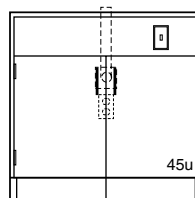
Standing Height Vacuum Pump Storage Fume Hood Cabinets



Vent Location

5" Off Center

11⅝" from Top of Cabinet



Vent Location

On Center

11⅝" from Top of Cabinet

Steel Cabinets (35" High)

G35C352024L ___ 24"L Left Hand

G35C352024- ___ 24"L Right Hand

Wood Cabinets (35" High)

G35W362024L ___ 24"L Left Hand

G35W362024- ___ 24"L Right Hand

G35C352030- ___ 30"L

G35C352036- ___ 36"L

G35C352048- ___ 48"L

G35W362030- ___ 30"L

G35W362036- ___ 36"L

G35W362048- ___ 48"L

ADA Height Vacuum Storage Fume Hood Cabinets

Steel Cabinets (32" High)

G35C322024L ___ 24"L Left Hand

G35C322024- ___ 24"L Right Hand

Wood Cabinets (32½" High)

G350W342024L ___ 24"L Left Hand

G350W342024- ___ 24"L Right Hand

G35C322030- ___ 30"L

G35C322036- ___ 36"L

G35C322048- ___ 48"L

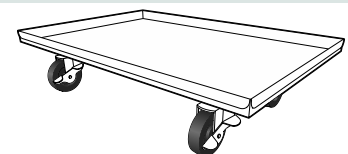
G35W342030- ___ 30"L

G35W342036- ___ 36"L

G35W342048- ___ 48"L

Vacuum Pump Cart

Vacuum Pump Carts are designed for use with Kewaunee's Vacuum Pump cabinets shown on this page. The cart consists of a 1" deep pan, fabricated from powder coated or stainless steel and mounted on 4" swivel casters.



Carts for 20" Deep Cabinets

Powder Coated Steel

Part Number	Length
VPCC061414-0000	14"
VPCC061420-0000	20"
VPCC061426-0000	26"
VPCC061432-0000	32"
VPCC061438-0000	38"
VPCC061444-0000	44"

Stainless Steel

Part Number	Length
VPCC061414-0030	14"
VPCC061420-0030	20"
VPCC061426-0030	26"
VPCC061432-0030	32"
VPCC061438-0030	38"
VPCC061444-0030	44"