

# Cupsinks

## Oval Cupsinks



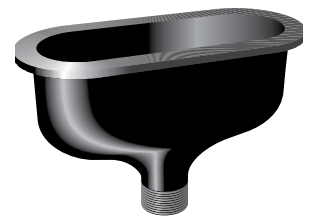
**0499-BP** Black Poly  
**0499-GP** Grey Poly  
**0499-SP** Slate Poly  
 Complete with integral strainer, 12" horizontal tail-piece, and 90° elbow with 1½" IPS male straight thread outlet. Cupsink inside dimension, 5½" x 3½". (Overall height is 7", tailpiece and elbow not illustrated)



**0490-BE** Black Epoxy  
**0490-GE** Grey Epoxy  
**0490-PE** Putty Epoxy  
**0490-SE** Slate Epoxy  
 Complete with removable strainer. 6"x 3" inside dimension. 1½" IPS male straight thread outlet. (Overall height is 7½")

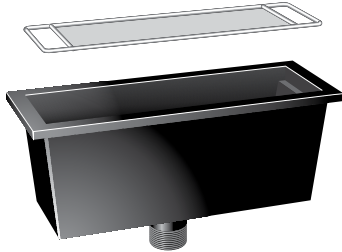


**0491-BP** Black Poly  
**0491-GP** Grey Poly  
 Complete with removable strainer. 6"x 3" inside dimension. 1½" IPS male straight thread outlet. (Overall height is 8½")



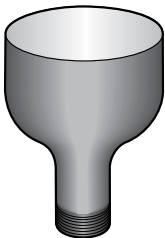
**0492-BP** Black Poly  
 Complete with removable strainer. 9"x 3" inside dimension. 1½" IPS male straight thread outlet. (Overall height is 7")

## Rectangular Cupsink

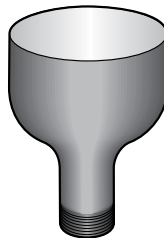


**0493-BE** Black Epoxy  
**0493-GE** Grey Epoxy  
**0493-PE** Putty Epoxy  
**0493-SE** Slate Epoxy  
 Complete with gasket and removable type 316 stainless steel wire screen. 13⅜" x 4⅛" x 5¼" I.D. 1½" IPS male straight thread outlet. (Overall height is 8")

## Stainless Steel Cupsinks



**0950-00** Stainless Steel  
 Made of type 304 stainless steel and has integral cross bars. 5" I.D. 1½" IPS male straight thread outlet. Designed to be welded into stainless steel tops.



**0951-00** Stainless Steel  
 Made of type 316 stainless steel and has integral cross bars. 5" I.D. 1½" IPS male straight thread outlet. Designed to be welded into stainless steel tops.



**0975-00** Stainless Steel  
 Made of type 316 stainless steel and has integral cross bars. 6" x 3" I.D. 1½" IPS male straight thread outlet. Designed to be welded into stainless steel tops.