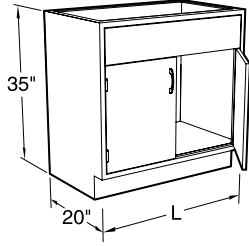


# Fume Hood Base Cabinets

## DIMENSIONAL VIEW



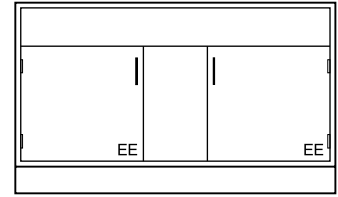
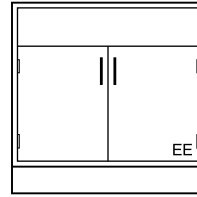
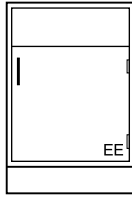
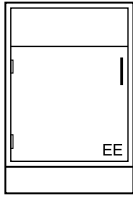
## Specifications

Standing Height Steel and Wood Fume Hood Base Cabinets are 35" high and a nominal 20" deep. ADA Height Steel Fume Hood Base Cabinets are 32" high and 20" deep; ADA Height Wood Fume Hood Base Cabinets are 32<sup>1</sup>/<sub>2</sub>" high and nominal 20" deep. Lengths as shown.

### Cabinet Style Option:

Specify cabinet door and hardware style when ordering by replacing blanks in last four digits of catalog number with style numbers. See the Research Collection Steel and Signature Series Wood Catalogs for available styles and details.

## Standing Height Fume Hood Base Cabinets



### Steel Cabinets

(35" High)

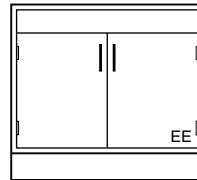
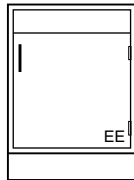
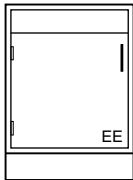
G08C352012L	12"L	G08C352012-	12"L	G08C352030-	30"L	G08C352060-	60"L
G08C352015L	15"L	G08C352015-	15"L	G08C352036-	36"L		
G08C352018L	18"L	G08C352018-	18"L	G08C352048-	48"L		
G08C352024L	24"L	G08C352024-	24"L				

### Wood Cabinets

(35" High)

G08W362012L	12"L	G08W362012-	12"L	G08W362030-	30"L	G08W362060-	60"L
G08W362015L	15"L	G08W362015-	15"L	G08W362036-	36"L		
G08W362018L	18"L	G08W362018-	18"L	G08W362048-	48"L		
G08W362024L	24"L	G08W362024-	24"L				

## ADA Height Fume Hood Base Cabinets



### Steel Cabinets

(33" High)

G08C322012L	12"L	G08C322012-	12"L	G08C322030-	30"L
G08C322015L	15"L	G08C322015-	15"L	G08C322036-	36"L
G08C322018L	18"L	G08C322018-	18"L	G08C322042-	42"L
G08C322024L	24"L	G08C322024-	24"L	G08C322048-	48"L

### Wood Cabinets

(32<sup>1</sup>/<sub>2</sub>" High)

G08W342012L	12"L	G08W342012-	12"L	G08W342030-	30"L
G08W342015L	15"L	G08W342015-	15"L	G08W342036-	36"L
G08W342018L	18"L	G08W342018-	18"L	G08W342042-	42"L
G08W342024L	24"L	G08W342024-	24"L	G08W342048-	48"L

# Solvent Storage Fume Hood Base Cabinets

## Specifications

Solvent Storage Cabinets are specifically designed for the storage of flammable and combustible liquids. Both steel and wood cabinets meet UFC, OSHA and NFPA No. 30-1993 construction standards. Steel cabinets are FM approved, Wood cabinets are UL listed.

A 2" deep, steel, liquid-tight pan covers the entire bottom to contain liquid leaks and spills. A second pan is provided

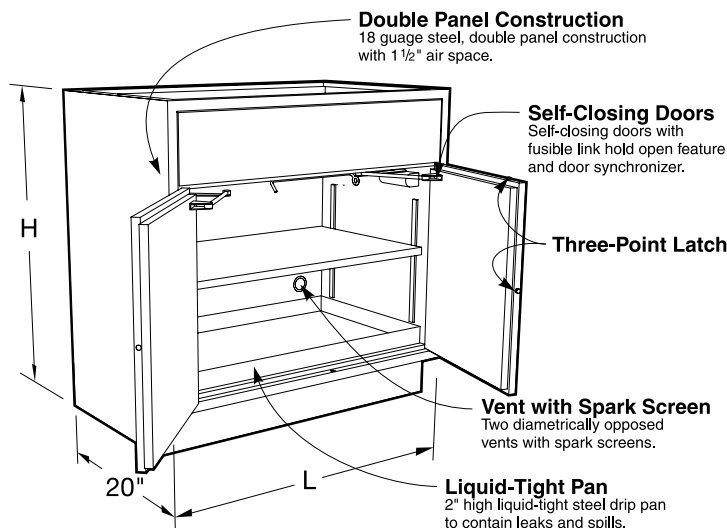
as a full-depth adjustable shelf.

Two diametrically opposed vents with spark screens are provided in the back for cases when ventilation is required.

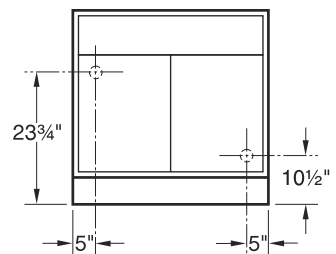
The steel cabinet is all 18 gauge steel, double panel construction with self-closing doors, synchronized so that both doors will always fully close. The right hand door is equipped with a three-point latching system that

automatically engages the cabinet frame. Each door is equipped with a fusible-link hold-open feature that ensures the doors close should the temperature outside the cabinet exceed 165°F. Steel cabinets are provided with a grounding screw at the rear.

All Solvent Storage Cabinets are labeled: CAUTION FLAMMABLE – KEEP FIRE AWAY in English, Spanish, and French.



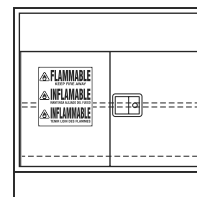
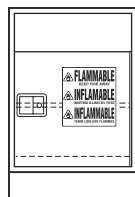
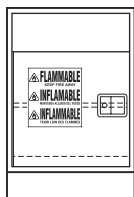
## Vent Locations



**Steel Solvent Cabinets**  
Vent outlets 2" dia. Female NPT

**Wood Solvent Cabinets**  
Vent outlets 1 1/2" dia. Male NPT

## Standing Height Solvent Storage Fume Hood Cabinets



Steel Cabinets (35" High)		Capacity		Capacity					
<b>G68C352024L_100</b>	24"L	<b>G68C352024-_100</b>	24"L	12 gal	<b>G68C352030-_100</b>	30"L	12 gal		
<i>Steel Solvent Storage Cabinets are available in Style 0 and 1 only.</i>				<b>G68C352036-_100</b>	36"L	15 gal	<b>G68C352048-_100</b>	48"L	20 gal
<i>Style 1 - Full Overlay furnished with toespace 1" deeper</i>				<b>Wood Cabinets (35" High)</b>		Capacity			
<b>G68W362024L_0_0</b>	24"L	<b>G68W362024-_0_0</b>	24"L	12 gal	<b>G68W362030-_0_0</b>	30"L	12 gal		
<i>Wood Solvent Storage Cabinets are available in Style 1 and 5 only</i>				<b>G68W362036-_0_0</b>	36"L	15 gal	<b>G68W362048-_0_0</b>	48"L	20 gal

## ADA Height Solvent Storage Fume Hood Cabinets

Steel Cabinets (32" High)		Capacity		Capacity					
<b>G68C322024L_100</b>	24"L	<b>G68C322024-_100</b>	24"L	12 gal	<b>G68C322030-_100</b>	30"L	12 gal		
<i>Steel Solvent Storage Cabinets are available in Style 0 and 1 only.</i>				<b>G68C322036-_100</b>	36"L	15 gal	<b>G68C322048-_100</b>	48"L	20 gal
<i>Style 1 - Full Overlay furnished with toespace 1" deeper</i>				<b>Wood Cabinets (32 1/2" High)</b>		Capacity			
<b>G68W342024L_0_0</b>	24"L	<b>G68W342024-_0_0</b>	24"L	12 gal	<b>G68W342030-_0_0</b>	30"L	12 gal		
<i>Wood Solvent Storage Cabinets are available in Style 1 and 5 only</i>				<b>G68W342036-_0_0</b>	36"L	15 gal	<b>G68W342048-_0_0</b>	48"L	20 gal

# Acid Storage Fume Hood Base Cabinets

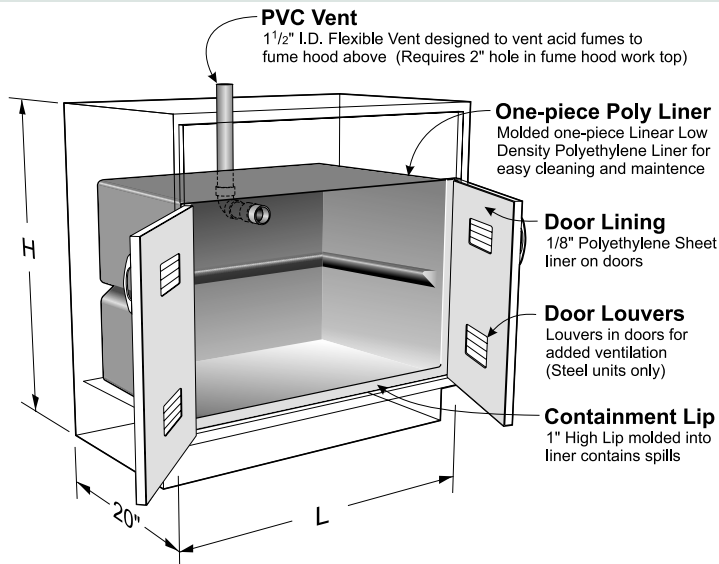
## Specifications

Acid Storage Fume Hood Base Cabinets are specifically designed for the storage of corrosive chemicals. They are available in either steel or wood. These cabinets are lined with a molded one piece linear low density polyethylene tub with covered corners and a 1" lip at the bottom

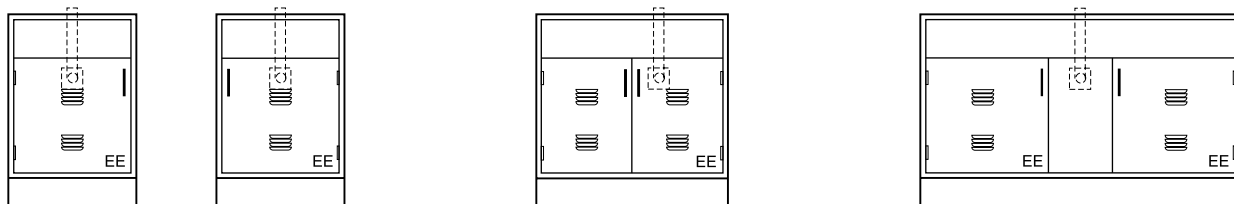
front. The cabinet doors are lined with 1/8" sheet polyethylene and the doors are latched using a nylon roller catch. Each cabinet is furnished with a 1 1/2" I.D. flexible polyolefin tube for venting to the fume hood above. (Requires a 2" hole in the hood work top.)

## Optional Removable Half-Depth Shelf

Part No.	
<b>019624</b>	Shelf for 24" cabinet
<b>019625</b>	Shelf for 30" cabinet
<b>019626</b>	Shelf for 36" cabinet
<b>019627</b>	Shelf for 48" cabinet



## Standing Height Acid Storage Fume Hood Cabinets



**Vent Location**

On Center  
11 5/8" from Top of Cabinet

**Vent Location**

30" – 7 5/8" Right of Center  
36" & 48" – 5" Right of Center  
11 5/8" from Top of Cabinet

**Vent Location**

On Center  
11 5/8" from Top of Cabinet

### Steel Cabinets (35" High)

**G80C352024L** \_\_\_\_\_ 24"L Left Hand

**G80C352024-** \_\_\_\_\_ 24"L Right Hand

### Wood Cabinets (35" High)

**G80W362024L** \_\_\_\_\_ 24"L Left Hand

**G80W362024-** \_\_\_\_\_ 24"L Right Hand

**G80C352030-** \_\_\_\_\_ 30"L

**G80C352036-** \_\_\_\_\_ 36"L

**G80C352048-** \_\_\_\_\_ 48"L

**G80C352060-** \_\_\_\_\_ 60"L

**G80W362030-** \_\_\_\_\_ 30"L

**G80W362036-** \_\_\_\_\_ 36"L

**G80W362048-** \_\_\_\_\_ 48"L

**G80W362060-** \_\_\_\_\_ 60"L

## ADA Height Acid Storage Fume Hood Cabinets

### Steel Cabinets (32" High)

**G80C322024L** \_\_\_\_\_ 24"L Left Hand

**G80C322024-** \_\_\_\_\_ 24"L Right Hand

### Wood Cabinets (32 1/2" High)

**G80W342024L** \_\_\_\_\_ 24"L Left Hand

**G80W342024-** \_\_\_\_\_ 24"L Right Hand

**G80C332030-** \_\_\_\_\_ 30"L

**G80C332036-** \_\_\_\_\_ 36"L

**G80M332048-** \_\_\_\_\_ 48"L

**G80W342030-** \_\_\_\_\_ 30"L

**G80W342036-** \_\_\_\_\_ 36"L

**G80W342048-** \_\_\_\_\_ 48"L

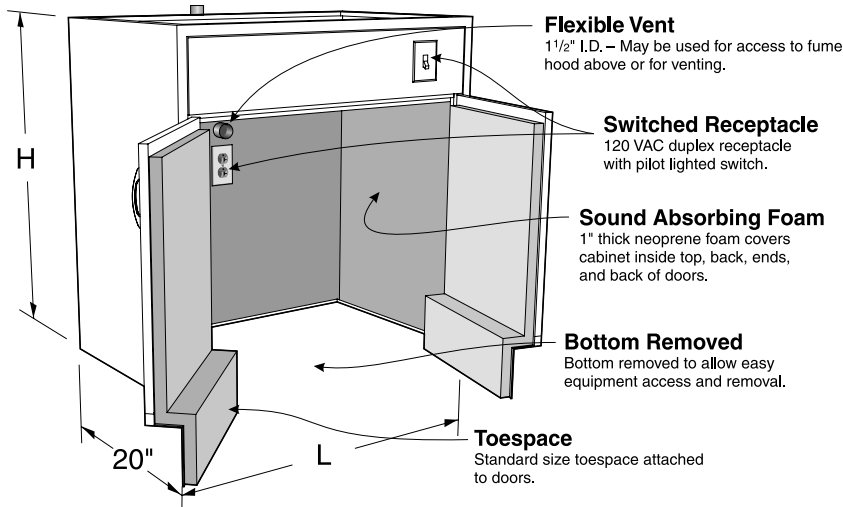
# Vacuum Pump Storage Base Cabinets

## Specifications

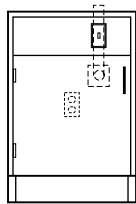
Vacuum Pump Storage Fume Hood Cabinets are designed without a bottom to allow vacuum pumps and other equipment to be rolled in or out of the cabinets. The interior is lined with 1" thick neoprene foam for sound deadening and easy cleaning. Each

cabinet is furnished with a 120 VAC, 20 amp, duplex receptacle mounted on the inside cabinet back and a pilot lighted toggle switch mounted in the top front rail. (Wiring is not included.) Each cabinet is furnished with a 1½" I.D. flexible polyolefin tube for venting

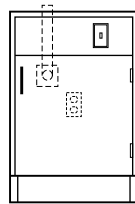
to the fume hood above. (Requires a 2" hole in the hood work top.) The toespace rail is attached to the door to allow total access to the cabinet. Cabinet inside clearance at the floor is 14½" front-to-back, 25" high, and 3" less than the overall cabinet length.



## Standing Height Vacuum Pump Storage Fume Hood Cabinets



**Vent Location**  
5" Off Center  
11<sup>5</sup>/<sub>8</sub>" from Top of Cabinet



**Vent Location**  
On Center  
11<sup>5</sup>/<sub>8</sub>" from Top of Cabinet

### Steel Cabinets (35" High)

G35C352024L	24"L	G35C352024-	24"L	G35C352030-	30"L
				G35C352036-	36"L
				G35C352048-	48"L

### Wood Cabinets (35" High)

G35W362024L	24"L	G35W362024-	24"L	G35W362030-	30"L
				G35W362036-	36"L
				G35W362048-	48"L

## ADA Height Vacuum Storage Fume Hood Cabinets

### Steel Cabinets (32" High)

G35C322024L	24"L	G35C322024-	24"L	G35C322030-	30"L
				G35C322036-	36"L
				G35C322048-	48"L

### Wood Cabinets (32½" High)

G35W342024L	24"L	G35W342024-	24"L	G35W342030-	30"L
				G35W342036-	36"L
				G35W342048-	48"L